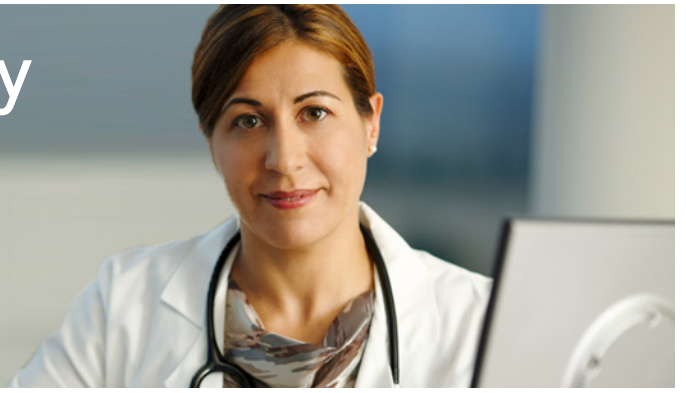


Intravenous Pyelography (IVP)

Outpatient Examination Instructions



Appointment

Date:

Time:

If you need to cancel or reschedule your appointment, please call 408-851-5020.

Arrival time for appointment

Arrive **30 minutes before** your scheduled procedure time to allow ample time for parking. While there are over 3,000 parking spaces available onsite, there will be times when parking can be difficult. For that reason, we encourage you to use the Valet Parking Service located at Homestead West Lobby of the Medical Office Building. There is no cost to this service and no gratuities are expected or accepted by the valets. You can even call ahead to have your car available for your departure from the medical center.

Please do not bring children that cannot be left unattended.

Appointment instructions

All patients with renal disease or dialysis patients on sodium diet restrictions should contact their physician regarding the laxative to be used.

Your physician has written a prescription to prepare you for your examination. Please go to the Kaiser Permanente pharmacy to pick up:

- Prescribed PEG-3350

Clear Liquids

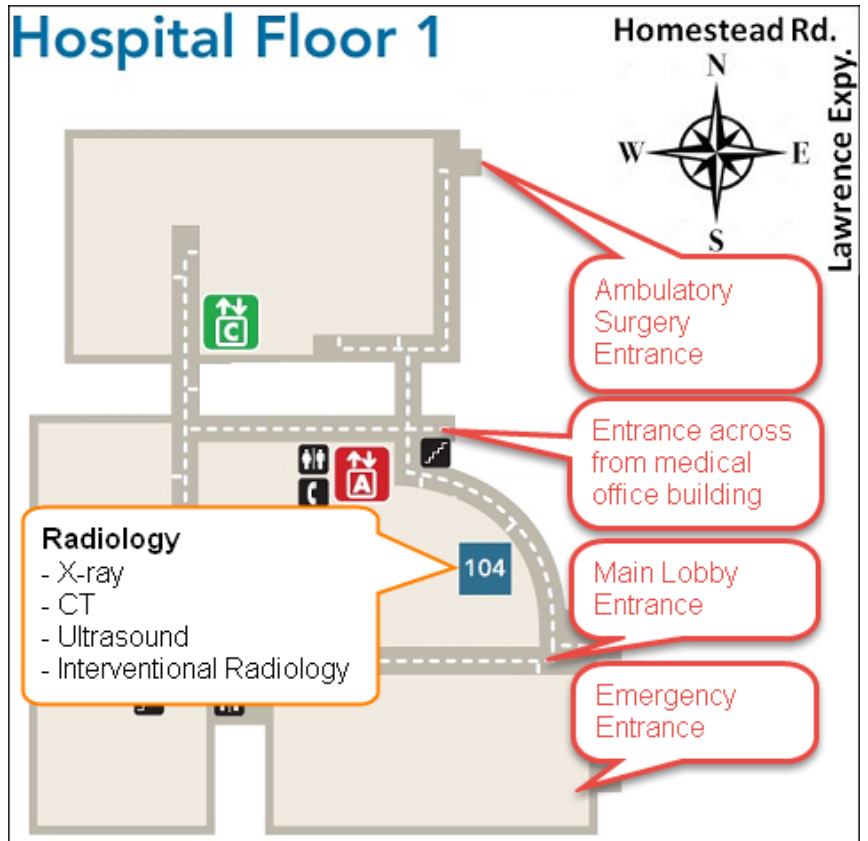
For pediatric patients with Hirschsprung's Disease, no prep of the colon is needed.

Day before procedure

Diet: You may have clear liquids all day. First thing in the morning the day before your exam, mix the Colyte powder with a gallon of water. Close the container, shake it and place in the refrigerator.

Santa Clara Medical Center Imaging Services

700 Lawrence Expressway
Department 104
Santa Clara, CA 95051-5173



Intravenous Pyelography (IVP)

Outpatient Examination Instructions

3:00 PM

Begin drinking the Colyte solution. Drink 1 cup (8 ounces.) every 15 minutes for 4 hours. Do not eat Jell-O after beginning to drink the Colyte. Shake the mixture before pouring each dose. You will drink about 16 cups of the Colyte mixture. You may rinse your mouth with diluted lemon or lime juice to control the after taste.

You may also try drinking through a straw. If you get nauseated, take a break for ½ hour and begin drinking the rest of the mixture as before. It's not uncommon to feel chills when drinking the solution, keep yourself warm. If hemorrhoids become irritated, it is OK to use Preparation H, Vaseline, Desitin, etc. After finishing the Colyte, you may have as many clear liquids as you desire, except Jell-O.

After the examination

Following the examination, you should drink fluids up to six (6) glasses of water or juices over the rest of the day.

BEVERAGES	SOUPS	DESSERTS
Water	Consume	Popsicles
Sprite / 7Up / Ginger Ale	Chicken broth	Clear hard candy
Gatorade /Kool-Aid	Beef broth	
Tea or coffee (no cream / milk)	Vegetable broth	
Apple juice	Bouillon	
White grape juice		
White cranberry juice		

Intravenous Pyelography (IVP)

Intravenous pyelography is an x-ray test that provides pictures of the urinary tract, which consists of the kidneys, the bladder, the uterus and the urethra. During IVP, a dye called contrast material is injected into a vein in the arm. A series of x-ray pictures is taken at timed intervals. IVP can show the size, shape and position of the kidneys, bladder, ureters and the urethra and it can evaluate the collecting system inside the kidneys. IVP is commonly done to diagnose certain diseases of the urinary tract (such as kidney stones, tumors, or infection) and to detect abnormalities of the urinary tract that were present from birth (congenital).

CALL US BEFORE YOUR PROCEDURE.

YOU MAY BE ASKED TO MAKE A PAYMENT ON THE
DAY OF YOUR FLUOROSCOPY PROCEDURE.

Your health and peace of mind are important to us. To help ensure that you'll be properly prepared for your scheduled procedure, please give us a call.

Depending on your health plan, you may be asked to make a payment or deposit when you check in on the day of your procedure.

If you have a deductible plan

If you have a deductible plan, you may be asked to pay a deposit toward the full amount of the charges for your visit. After your visit, you will receive a bill for the remainder of the balance, based on the procedure performed and specific benefits of your plan. To find out what the full amount will be, visit us at

kp.org/memberestimates or call 1-800-390-3507, weekdays from 7 a.m. to 5 p.m., and select option 2.

If you do not have a deductible plan

If you do not have a deductible plan and have questions about your benefits or want to know your payment amount for your procedure, visit us at kp.org/memberestimates or call our Member Service Call Center at 1-800-464-4000 or 1-800-777-1370 (TTY for the deaf, hard of hearing, or speech impaired), weekdays from 7 a.m. to 7 p.m. and weekends from 7 a.m. to 3 p.m.

Making your payment

You may pay by credit card (Visa, MasterCard, American Express, or Discover Card), personal check, or cash, or you may use your ATM/debit card.

If you need financial assistance

Kaiser Permanente offers financial assistance. If you are concerned about your ability to pay your cost share or deductible deposit, or if you do not have health insurance, our Medical Financial Assistance and Discount Payment Program may be able to help. For more information or to obtain an application, log on to our Web site at kp.org/mfa. You may also call toll free at **1-866-399-7696**, weekdays from 8 a.m. to noon and 1 to 5 p.m., or you may speak with one of our local Kaiser Permanente financial counselors.

kp.org