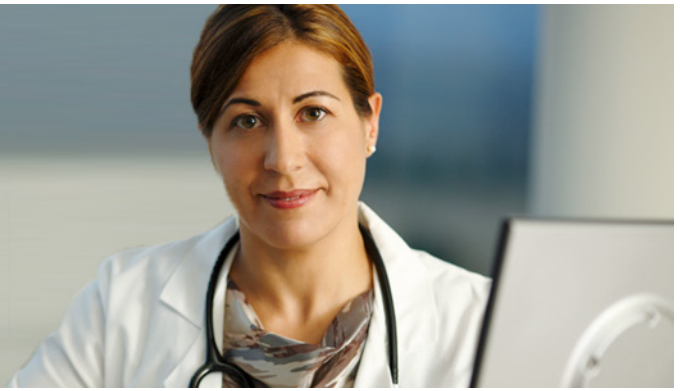


# Upper Gastrointestinal (UGI)

## Outpatient Examination Instructions



### Appointment

Date:

Time:

If you need to cancel or reschedule your appointment, please call 408-851-5020.

### Arrival time for appointment

Arrive at least **15 to 30 minutes before** your scheduled procedure time. If you are late, your procedure may be cancelled or rescheduled for a later time. Please allow extra time to find parking and appointment location.

Please do not bring children that cannot be left unattended.

### Santa Clara Medical Center Imaging Services

700 Lawrence Expressway  
Department 104  
Santa Clara, CA 95051-5173

### Appointment instructions

Take nothing by mouth (including water, coffee, and chewing gum) after midnight the night before the examination until the x-rays have been completed. If you are on medication, please discuss this with your doctor.

If you are a smoker, try not to smoke the morning of your exam. X-rays of your stomach are not as good after recent smoking. If you are diabetic, check with your doctor about any necessary changes in your medications.

Each examination is tailored to the patient and varies in length. Appointment lengths may range from 20 minutes to several hours. Please be understanding if your exam is delayed due to lengthy exams ahead of you.

### After the examination

The barium liquid used to outline your gastrointestinal tract tends to be constipating. Drink 1 to 2 quarts of extra fluids during the day after your exam is finished.

### Upper gastrointestinal examination

An upper gastrointestinal (UGI) series looks at the upper and middle sections of the gastrointestinal tract. The test uses barium contrast material, fluoroscopy, and x-ray.

Before the test, you drink a mix of barium contrast material and water. The barium is often combined with gas-making crystals. A radiologist (the doctor who specializes in x-ray exams) will follow the movement of the barium through your body on a video screen while you are drinking. Several x-ray pictures are taken at different times and from different views.

A small bowel follow-through may be done immediately after a UGI to look at the rest of the small intestine. If just the throat and esophagus are looked at, it is called an esophagram (or barium swallow).

# CALL US BEFORE YOUR PROCEDURE.

YOU MAY BE ASKED TO MAKE A PAYMENT ON THE  
DAY OF YOUR FLUOROSCOPY PROCEDURE.

**Your health and peace of mind are important to us. To help ensure that you'll be properly prepared for your scheduled procedure, please give us a call.**

Depending on your health plan, you may be asked to make a payment or deposit when you check in on the day of your procedure.

## **If you have a deductible plan**

If you have a deductible plan, you may be asked to pay a deposit toward the full amount of the charges for your visit. The deposit for a fluoroscopy that is not procedural guidance is \$60. After your visit, you will receive a bill for the remainder of the balance, based on the procedure performed and specific benefits of your plan. To find out what the full amount will be, visit us at [kp.org/memberestimates](https://kp.org/memberestimates) or call 1-800-390-3507, weekdays from 7 a.m. to 5 p.m., and select option 2.

## **If you do not have a deductible plan**

If you do not have a deductible plan and have questions about your benefits or want to know your payment amount for your procedure, visit us at [kp.org/eligibilityandbenefits](https://kp.org/eligibilityandbenefits) or call our Member Service Call Center at 1-800-464-4000 or 1-800-777-1370 (TTY for the deaf, hard of hearing, or speech impaired), weekdays from 7 a.m. to 7 p.m. and weekends from 7 a.m. to 3 p.m.

## **Making your payment**

You may pay by credit card (Visa, MasterCard, American Express, or Discover Card), personal check, or cash, or you may use your ATM/debit card.

## **If you need financial assistance**

Kaiser Permanente offers financial assistance. If you are concerned about your ability to pay your cost share or deductible deposit, or if you do not have health insurance, our Medical Financial Assistance and Discount Payment Program may be able to help. For more information or to obtain an application, log on to our Web site at [kp.org/mfa](https://kp.org/mfa). You may also call toll free at **1-866-399-7696**, weekdays from 8 a.m. to noon and 1 to 5 p.m., or you may speak with one of our local Kaiser Permanente financial counselors.

[kp.org](https://kp.org)