

TAKING YOU WELL INTO THE FUTURE



NEW OAKLAND MEDICAL CENTER

Hospital, Emergency Department, and Specialty Medical Offices

Kaiser Permanente's flagship facility is getting quite a healthy boost. Blending advanced technology with a warm human touch, our new Oakland Medical Center is poised to serve the greater East Bay for many generations to come.

First opened in 1942, our Oakland Medical Center has been redesigned with our members and the community in mind. Inside, Earth-friendly enhancements will complement the care and healing taking place every day. Outside, our improvements extend to Mosswood Park, where everyone is invited to relax and play in a renewed and healthy environment.

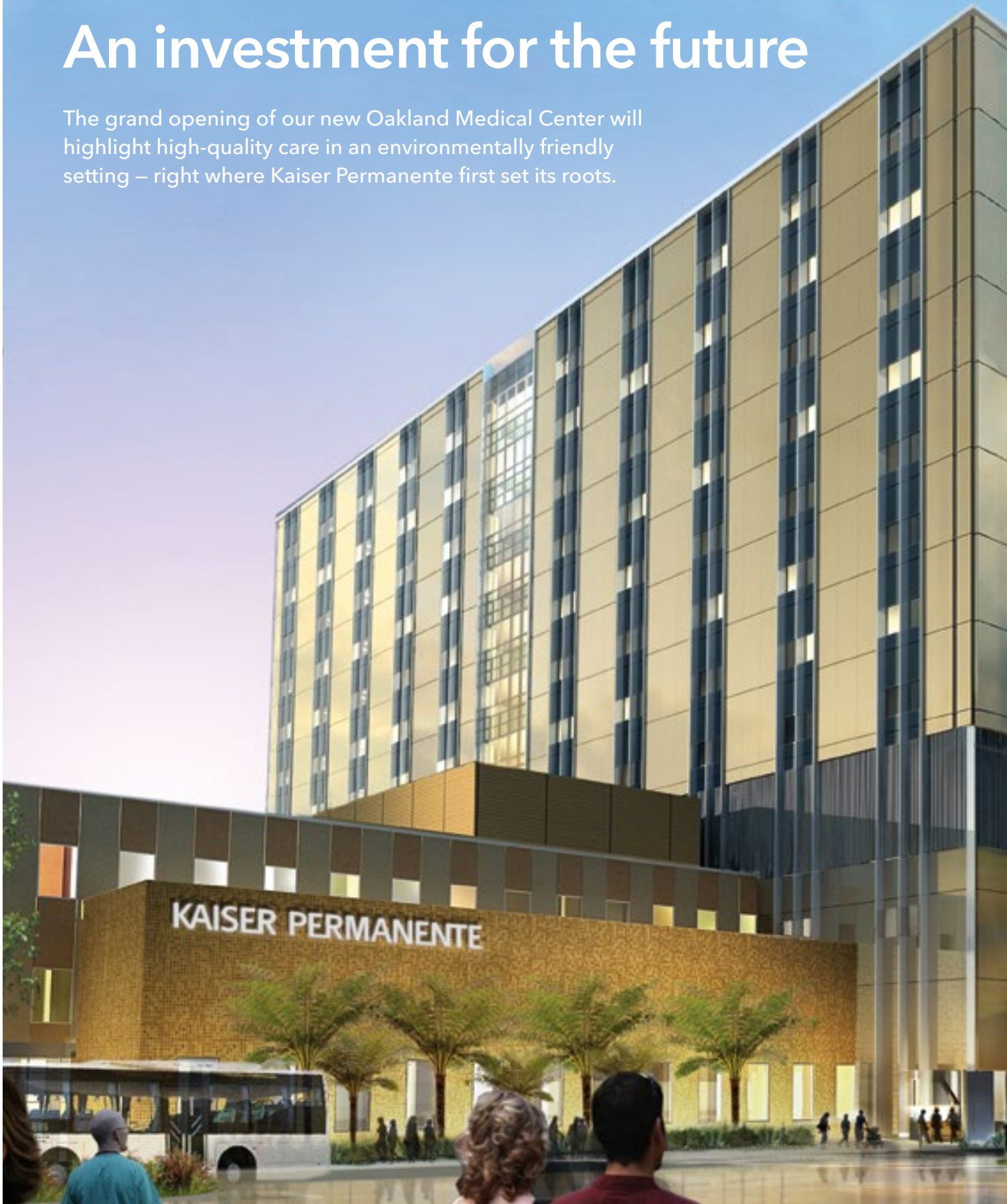
To help create a healthier future for all, our medical center will be more energy efficient than ever. Spanning just 20 acres, it takes up

less than half the space normally required by similar facilities, which reduces our footprint on the planet even further.

Steeped in history yet modern through and through, the new Kaiser Permanente Oakland Medical Center will soon open its doors to serve you and your family. Here's your sneak peek into the future of health care.

An investment for the future

The grand opening of our new Oakland Medical Center will highlight high-quality care in an environmentally friendly setting – right where Kaiser Permanente first set its roots.





Welcome to our new Oakland Medical Center

At Oakland Medical Center, we're proud to be part of the substantial investment Kaiser Permanente has been making for our members and for communities throughout California.

The ambitious effort to expand and enhance our hospitals and other medical facilities reflects our commitment to our members, and helps make sure everyone we serve has access to quality care.

Investing in your family

When our new hospital opens in July 2014, we'll unveil one of our most anticipated additions – a spectacular new pediatric center that promises to be one of the most comprehensive children's centers in the Bay Area.

Rivalling many dedicated children's hospitals, our new pediatric center will offer skilled and intensive care for infants and children of all ages. With access to a wide range of specialized physicians, staff, and equipment dedicated to the health and healing of children, you can be confident that your children will get the advanced, compassionate care they need.

Investing in your wellness

As a health care leader, we're committed to providing world-class care that's both technically advanced and medically sound. One example is our use of the intraoperative MRI (iMRI), one of the most precise imaging technologies available for pediatric brain surgery.

With the iMRI, our neurosurgeons will be able to view the complex features of the brain while performing delicate surgery for children with brain tumors. This improves the chance of removing the entire tumor, which can lead to faster, more successful recoveries – and save lives.

Investing in our community

Our dedication to total health means we support the broader community, as well as our members. To ease driving conditions and encourage healthy foot traffic in the area, we've improved sidewalks and crosswalks. At Mosswood Park, we've resurfaced tennis courts and helped build community gardens, new basketball courts, and a "Tot Lot" for young children to play safely.

We hope you'll join us in celebrating the grand opening of our new Oakland Medical Center in 2014. We're proud of our history here in Oakland, and we look forward to serving our community for a long time to come.

Claude Watts, Jr.
Chief Operating Officer, Oakland and
Interim Senior Vice President and Area
Manager, East Bay

John Loftus, MD
Physician in Chief
Oakland Medical Center



Building a healthier tomorrow

A wide range of specialists for your unique needs

Since January 6, 2014, these departments have been located at our new specialty medical office building.

- Cardiology
- Gastroenterology
- Head and Neck Surgery
- Lithotripsy
- Maxillofacial
- Nephrology
- Nuclear Medicine
- Orthopedics
- Podiatry
- Pediatric Neurosurgery
- Pulmonology
- Radiology/Imaging
- Respiratory Care Services
- Sleep Clinic
- Spine Surgery
- Surgery Clinic
- Urology

All services are by referral only.

Expanding care and services for you and your family

We're delivering on our commitment to the health and well-being of our members and the community we serve with our new hospital and specialty medical office building at the Oakland Medical Center.

These new facilities will expand our services to help you get the right care at the right time. From preventive screenings to specialty visits, and from minor surgery to extended hospital stays, you can find it all at our new Oakland Medical Center.

Specialty medical office building

We rang in a new era for Oakland Medical Center with the grand opening of our specialty medical office building on January 6, 2014. Like our other medical office buildings, this facility includes pharmacy, lab, health education, and radiology/imaging services for your convenience.

With more than 100 physician offices on 4 floors, the new building brings together many specialty departments to help make your care more coordinated. The 6 outpatient operating rooms and 7 procedure rooms are supported by 46 recovery bays, where you can be monitored and cared for as needed before you head home.

State-of-the-art hospital tower opening July 1, 2014

Right before Independence Day, we'll celebrate the grand opening of our new 12-story hospital tower. Featuring all private rooms, the new 349-bed hospital at Oakland Medical Center will provide a broad range of care and services to meet your needs.

THE FUTURE LOOKS BRIGHT IN OAKLAND

We're enhancing the pediatric experience in the East Bay. Our new Oakland Medical Center will house a pediatric intensive care unit, pediatric hospital ward, and a neonatal intensive care unit – all with new private rooms for your family's comfort and peace of mind. Plus, there will be an expanded playroom for younger children and a lounge for teenagers to help ease their minds and spirits while they heal.



For overnight guests, each patient room will include a sofa bed or sleeper chair so a loved one can rest comfortably while you heal. And next to our hospital, a new parking structure will be available for the many members and their families who visit us every day.

High technology for high-quality care

Our passion for providing great care means we offer innovative treatments that bring positive results. The intraoperative MRI (iMRI), used for detailed imaging during delicate surgery, is a great example. A state-of-the-art Operating Room/Interventional Radiology Suite and cardiac catheterization services will further increase the range of quality care available to patients.

Our new hospital will also include a comprehensive pediatric center with a Level 3 neonatal intensive care unit to treat our most fragile newborns. Expectant moms can receive full labor and delivery services, including care for high-risk pregnancies. We'll also offer a new Emergency Department to serve our members and the community around the clock.

To find a complete list of departments and services at our Oakland Medical Center campus, visit kp.org/oakland.



Pediatric specialists by referral:

- Cardiology
- Endocrinology
- Gastroenterology
- Infectious Diseases
- Nephrology
- Neurology
- Neuro-oncology
- Neurosurgery
- Oncology/
Hematology
- Orthopedics
- Pathology
- Pulmonology
- Rheumatology

Advancing wellness for the long haul

The recent construction of our new Oakland Medical Center will help us meet the needs of our members well into the future. New facilities include a hospital, a specialty medical office building, and a parking garage with over 1,200 spaces.

Throughout construction, we used materials carefully selected to help reduce health risks and protect the environment. The overall design also provides many outdoor green spaces to promote relaxation and healing.

Protecting health inside and out

Using building practices recognized by the Green Guide for Health Care (gghc.org) for “high-performance healing environments,” our buildings conserve water and energy in many ways.

- **High-performance windows** increase natural light while reducing unwanted heat.
- **A cleaner air-conditioning system** cools with fewer chemicals.
- **Passive cooling** that uses fresh outdoor air reduces the need for air conditioning.
- **Smarter pavement and landscaping** filters and holds rainwater to reduce runoff into sewers.

Creating an oasis of healing

Our new Oakland Medical Center is landscaped with many beautiful, drought-resistant native plants for maximum eco-impact.

- **Courtyard:** A landscaped courtyard on the first floor of the hospital allows plenty of sunshine, and includes seating and a short walking path between entrances.
- **Neonatal Intensive Care Unit (NICU Garden):** A private garden off the NICU offers families a peaceful place to visit.
- **Plaza:** A large plaza between the southern hospital entrance and the parking garage provides outdoor seating and a spacious landscaped area for relaxation.
- **Mosswood Park:** A pathway from the east side of Piedmont Avenue allows members, visitors, employees, and neighbors to access Mosswood Park through our plaza.

To learn more about our Oakland Medical Center and our green efforts, go to kp.org/oakland and kp.org/green. For construction questions, call the Oakland Medical Center Construction Hotline at **510-752-1516**.



Finding your way around will be easy

Look for our interactive touchscreen directories in key areas of our new buildings. They can help you get where you need to go clearly and easily.

Available in English, Spanish, and Chinese, all directions and information can be viewed in larger format for easier reading. If you're in a wheelchair, simply touch the wheelchair icon to put the information you need in reach.

Just tap the screen to start your search. It's as easy to use as a tablet computer.

- Look up your appointment location by department or provider name.
- Find locations of scheduled classes and meetings.
- Map a route to your chosen destination.
- Save maps and directions to your smartphone or mobile device.

Our ongoing tradition of good health

One of the earliest milestones in Kaiser Permanente history dates back to 1942, at the height of World War II, when founders Henry J. Kaiser and Sidney Garfield, MD opened our first hospital in Oakland.

A history of caring in Oakland

The flagship hospital in Oakland was opened to care for the workers of the Kaiser shipyards. Many had come from across the country to help meet critical wartime demands.

After the war, as Oakland grew, our hospital grew along with it. In 1959, a pediatric unit was opened to serve the postwar baby-boom generation. In 1972, a new 12-story hospital tower replaced the earlier facility. Other buildings were added over time, to expand care and services for our members and the community.

Our early passion for prevention

Early on, Kaiser Permanente's founders promoted wellness and prevention to help maintain a healthy workforce. Newsletters for the Kaiser shipyards reminded workers to eat three square meals a day and avoid too much fat and sugar.

Good health today and beyond

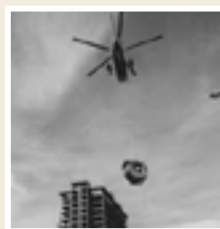
Our passion for keeping people healthy has always remained strong. In fact, you'll find food and nutrition tips conveniently displayed on a large interactive wall in our Oakland Medical Center.

To promote healthy eating, our facility also hosted the first Kaiser Permanente farmers market in 2003. Since then, our farmers markets have spread through all of our regions across the country.

Other programs in Oakland include our Healthy Living classes (some may require a fee), community health fairs, sponsored fitness events, our educational theater programs in local schools, support for nonprofit health and social service organizations, and participation in the improvement of public spaces like Mosswood Park.



Kaiser Foundation Hospital Oakland opens. Sidney Garfield, MD inspects the renovation with Facilities Manager Ned Dodds.



Hospital expansion opens. A helicopter lifts air-conditioning equipment to the rooftop in March 1971 during the expansion project.

1942

1972

1945

2009

Hospital addition opens. "It would be difficult to find any project more intelligently or thoroughly executed." - Architect and Engineer magazine.



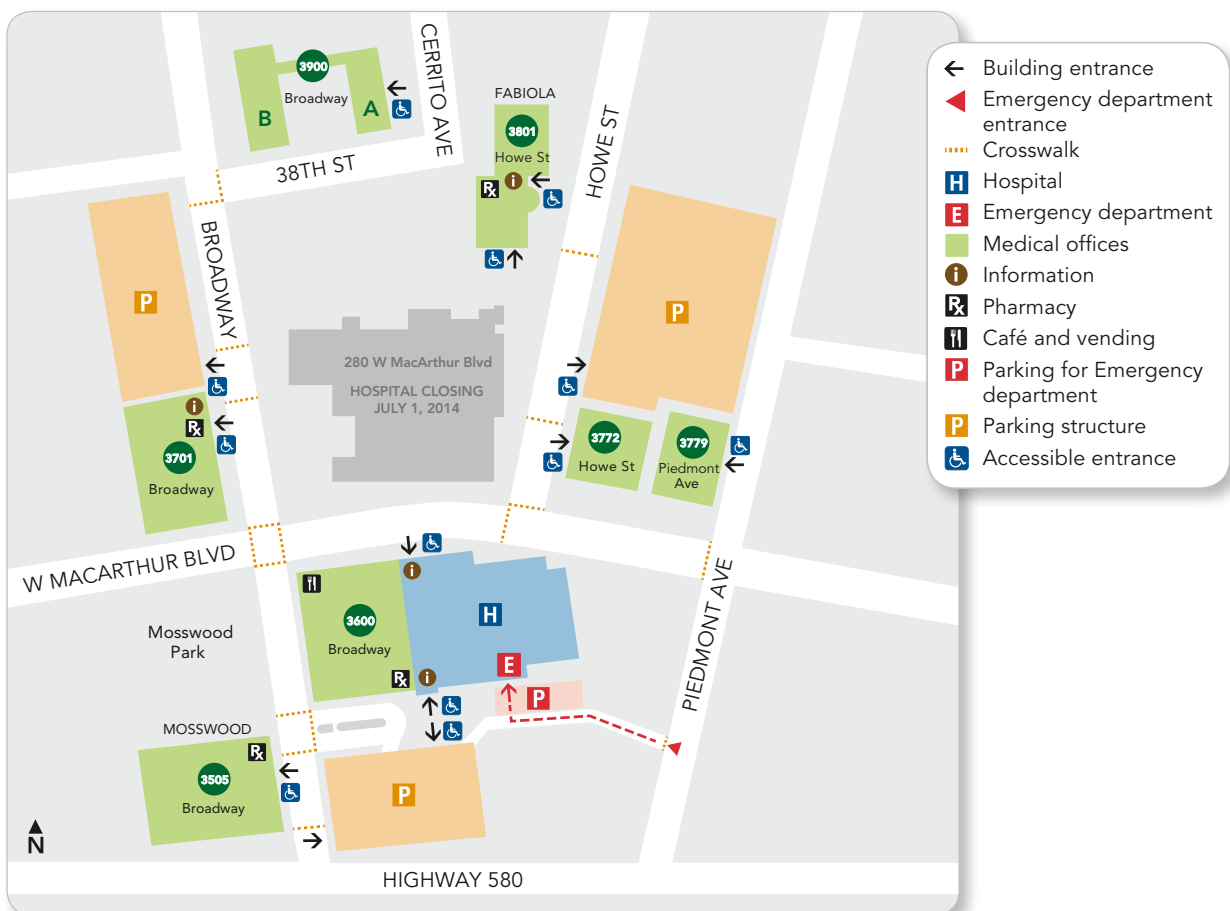
Current construction begins. The existing hospital will eventually be removed to make room for a new building and additional parking.



Oakland Medical Center Campus

We currently provide care and services at the following locations:

- **New Hospital and Emergency Department**
3600 Broadway
- **The NEW Emergency Department entrance is located on Piedmont Ave.**
Scheduled to open July 1, 2014.
- **Specialty Medical Office Building**
3600 Broadway
- **3900 Broadway Buildings**
Buildings 1 and 2
Parking and entrance to both buildings is from Cerrito Ave.
- **Broadway Medical Office Building and Cancer Center**
3701 Broadway
- **Fabiola Building**
3801 Howe St.
- **Howe St. Building**
3772 Howe St.
- **Mosswood Building**
3505 Broadway
- **MRI Building**
3784 Broadway
- **Piedmont Building**
3779 Piedmont Ave.



Map not to scale

To learn more, visit kp.org/oakland.